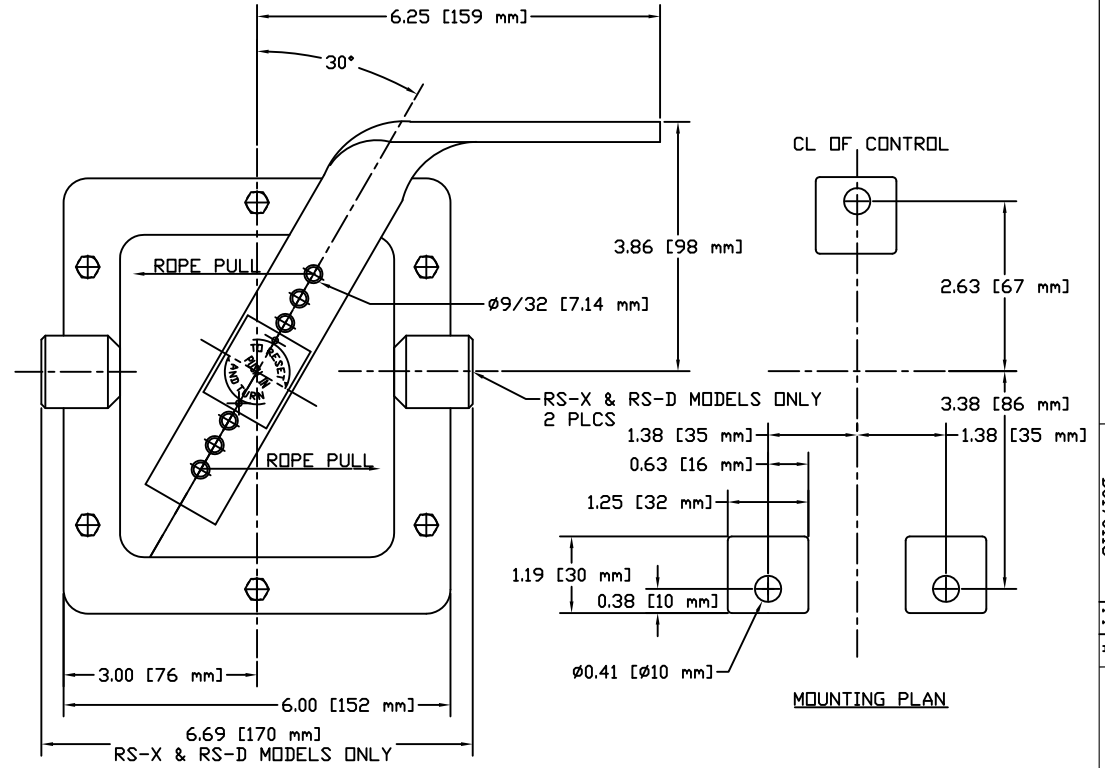
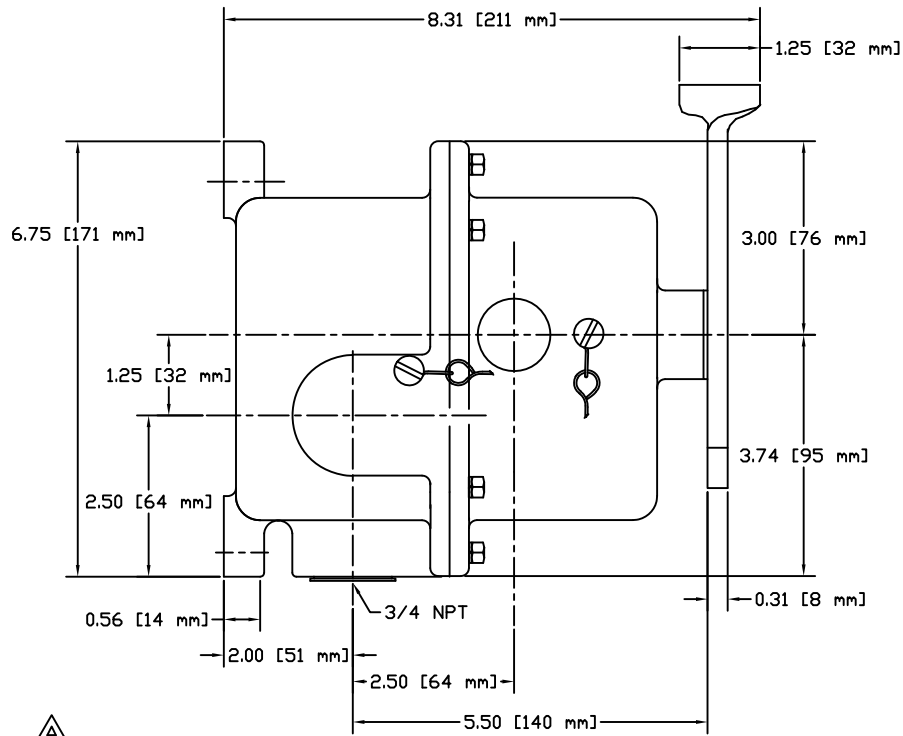
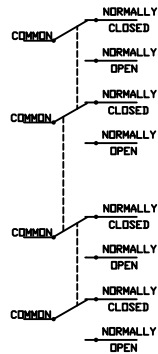


DWG. NO. D0170118		SHT. REV. 1 A	
REVISIONS			
REV.	EC'D	DESCRIPTION	DATE BY APP'D
A	2265	ADD DP/DT DATA	11/14/03 GL JK



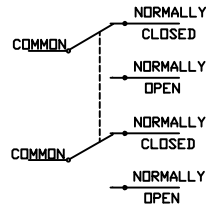
ELECTRICAL DATA RS(B)-5(D, X)
2 DP/DT SWITCHES.
(RS(B)-4(D, X) HAS ONE DP/DT SWITCH).

DP/DT SWITCH DATA:
15 AMPS 125 OR 250 VAC
3/4 HP 125 VAC; 1 1/5 HP 250 VAC



ELECTRICAL DATA RS(B)-2(D, X)
2 SP/DT MICRO-SWITCHES.
(RS(B)-1(D, X) HAS ONE SP/DT MICRO-SWITCH).

SP/DT MICRO-SWITCH RATING:
20 AMPS 125, 250 OR 480 VAC
1 HP 125 VAC; 2 HP 250 VAC
1/2 AMP 125 VDC; 1/4 AMP 250 VDC



THIS DRAWING IS COMPUTER GENERATED.			
DWN	GL	DATE	11/27/02
CKD	GL	DATE	11/27/02
APD	JK	DATE	11/27/02
THIS PRINT IS THE PROPERTY OF CONVEYOR COMPONENTS CO. AND MUST NOT BE USED IN WHOLE OR PART WITHOUT WRITTEN PERMISSION.			
PART NO.		DWG. NO.	REV.
SCALE N.A.		D0170118	A
SIZE D		SHT. 1-1	

CONVEYOR COMPONENTS CO.
130 SELTZER RD, CROSWELL, MI 48422
RS-X; RS-D; RSB-X/D PRODUCT DRAWING

DWG. NO. D0170118 SHT. REV. 1 A